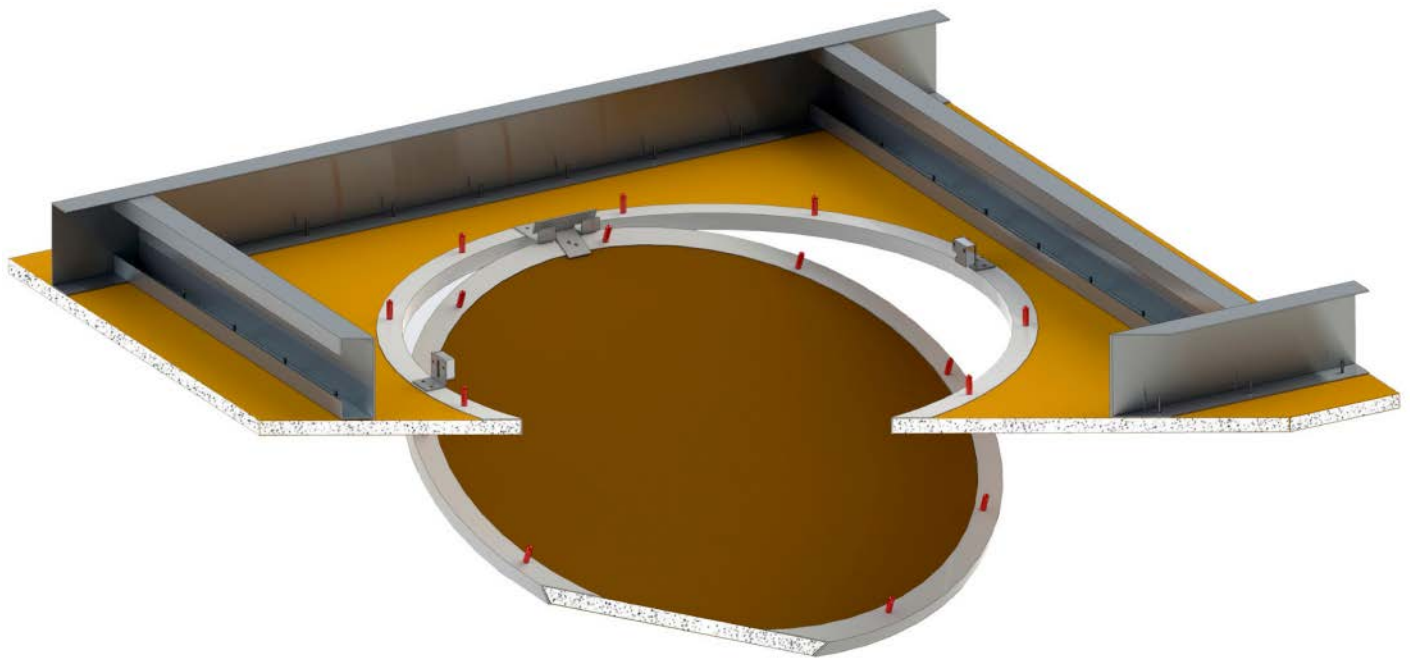


BAUCO® rondo

Circular Access Panels for Drywall



BAUCO® rondo

CIRCULAR ACCESS PANELS DESIGNED FOR DRYWALL

DESCRIPTION

The **BAUCO® rondo** is a circular gypsum wallboard access panel based on the design principles of the square **BAUCO® plus II** model. The concealed hardware lets it blend seamlessly with the surrounding wall or ceiling. Once installed and finished a clean 1/16" void is all that remains visible. All elegant and functional treatments can be applied to the door as well.

FOR USE IN

- All assemblies clad in gypsum wallboard, 1/2" or 5/8"
- Wall or ceiling installation
- New construction or repairs
- Rough openings in GWB without abutting structures
- Maximum clearance with removable door leaf
- This product is not fire rated

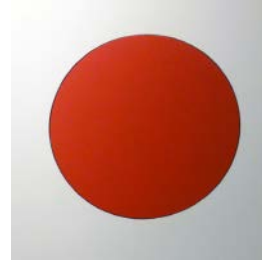
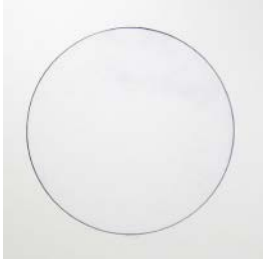
BENEFITS

- Circular access to match other curvilinear design features
- Consistent continuous surfaces for virtually invisible access
- 1/16" (2 mm) visible gap
- Apply your choice of surface treatments directly to the door leaf
- Superior acoustics with gasket and mass of GWB in door

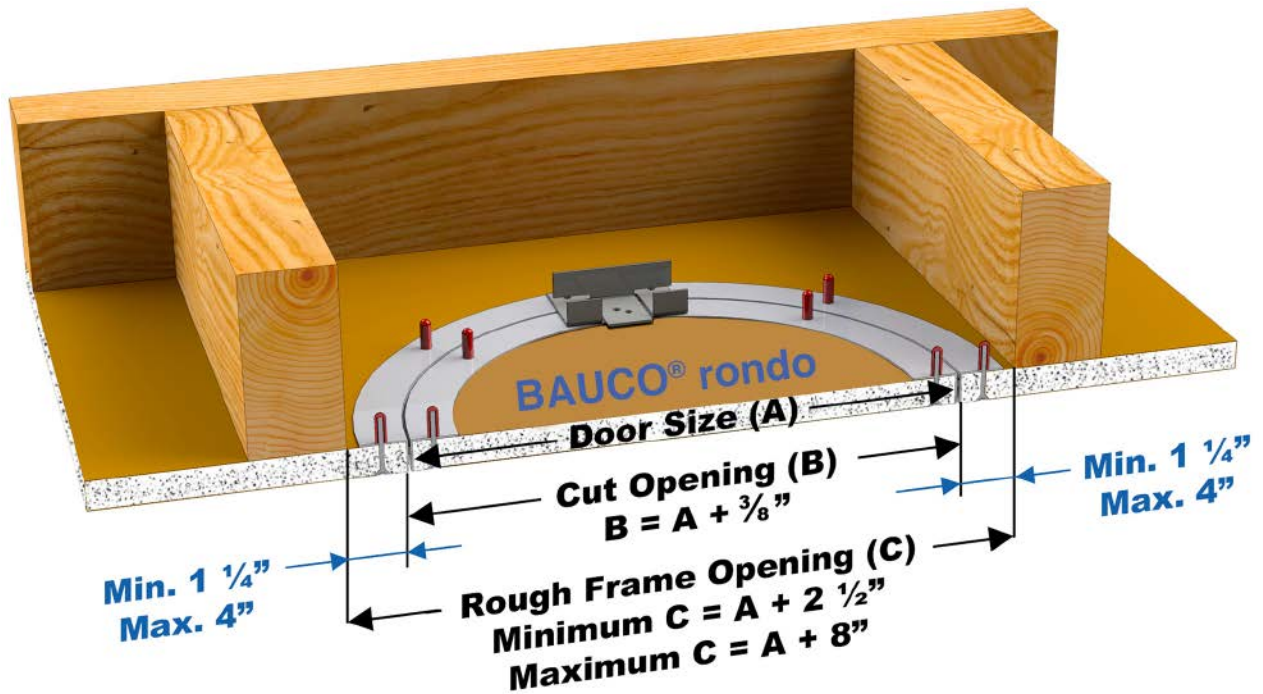


BAUCO® rondo

ARCHITECTURAL ACCESS PANEL WITH CONCEALED HARDWARE AND GYPSUM BOARD INLAY



FRAMING GUIDE



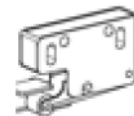
STANDARD FEATURES

- Concealed mechanical touch latch
- Concealed hardware (frame, latch, and hinge)
- Frame fits both 1/2" and 5/8" material
- Fully removable door panel with safety cables
- Moisture resistant gypsum wallboard inlay

SIZES AVAILABLE: 12", 16", AND 24"

LATCH OPTIONS

Touch Latch



Keyed Lock



CAM Latch



TORX Latch



BAUCO RONDO CIRCULAR CEILING ACCESS PANEL

FOR USE IN:

- ALL ASSEMBLIES CLAD IN GYPSUM WALL BOARD
- CEILING INSTALLATION
- NEW CONSTRUCTION OR REPAIRS
- ROUGH OPENINGS IN GWB WITHOUT ABUTTING STRUCTURES

BENEFITS:

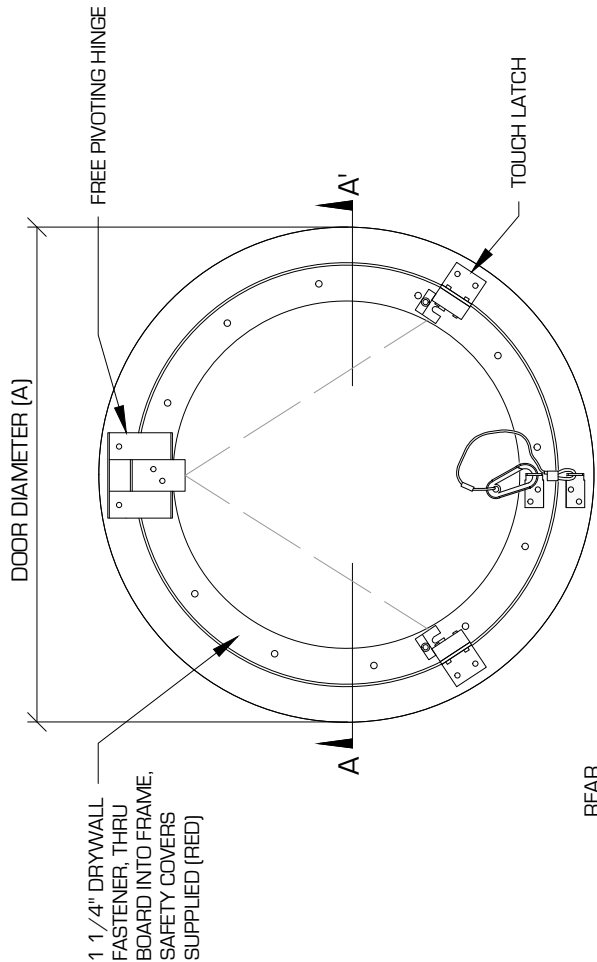
- CIRCULAR ACCESS TO MATCH OTHER CURVILINEAR DESIGN FEATURES
- CONSISTENT CONTINUOUS SURFACES FOR VIRTUALLY INVISIBLE ACCESS (ONLY A 1/16" 1.5 MM VOID REMAINS VISIBLE)
- SUPERIOR SOUND BARRIER MAINTAINED BY MASS OF GYPSUM WALLBOARD IN DOOR.
- GYPSUM SURFACES SUITED TO ELEGANT AND FUNCTIONAL TREATMENTS.
- UNENCUMBERED ACCESS WITH REMOVABLE DOOR LEAF
- EASY INSTALLATION WITH COMMON TROWEL TOOLS.

STANDARD FEATURES:

- CONCEALED HARDWARE (FRAME, LATCH & HINGE)
- FRAME FITS BOTH 1/2" & 5/8" MATERIAL FULLY REMOVABLE DOOR PANEL WITH SAFETY CABLES
- MECHANICAL CONCEALED TOUCH LATCH
- MOISTURE RESISTANT GYPSUM WALLBOARD INLAY

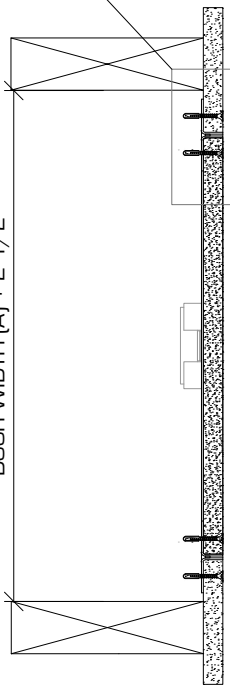
OPTIONS:

- CAM LATCH



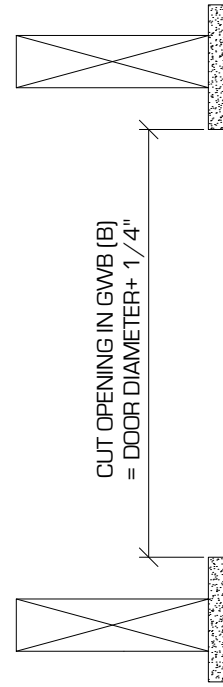
REAR

ROUGH OPENING (C)
= DOOR WIDTH (A) + 2 1/2"



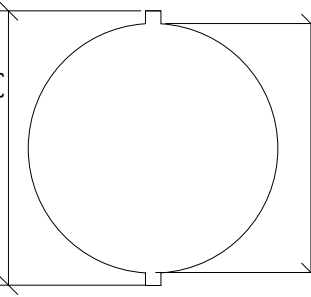
SECTION A-A

CUT OPENING IN GWB (B)
= DOOR DIAMETER + 1/4"



SECTION A-A WITHOUT ACCESS PANEL

CUT OPENING INTO GYPSUM BOARD,
PASS FRAME THROUGH AND LAY DOWN
DOOR DIAMETER (A) + 2"



CUT OPENING IN GWB (B)
= DOOR DIAMETER(A) + 1/4"

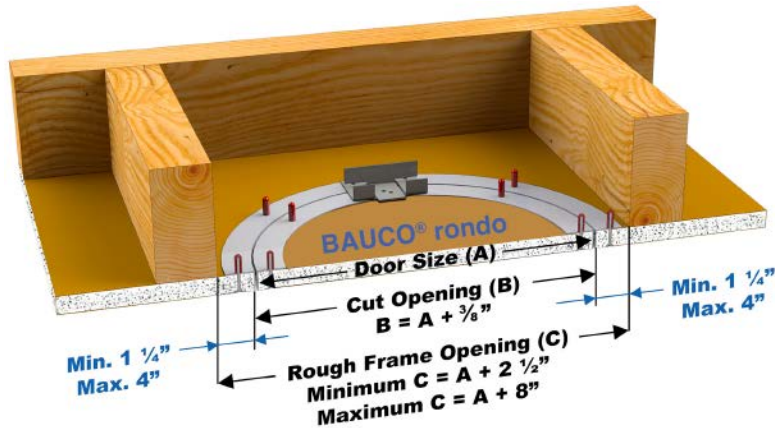
NOMINAL SIZE	MODEL NUMBER	DIAMETER (A)	
		INCH	MM
12"	20-58-300D/A	11 7/8" ID	300 ID
16"	20-58-400D/A	15 3/4" ID	400 ID
24"	20-58-600D/A	23 5/8" ID	600 ID

BAUCO[®] rondo

INSTALLATION INSTRUCTIONS



FRAMING GUIDE



1. Frame/block ceiling as outlined above. Take measurements for reference to center of circle.

2. Separate outside frame from access panel assembly. Open touch latches, unhook safety cable, and pull out the door leaf.

Tip: Place outer frame in ceiling area on top of joist if possible for later retrieval.

3. Drywall ceiling. Transfer circle center point.

4. Cut out opening in drywall in appropriate spot. Remove any frayed edges and debris from back of drywall. If outside frame was stashed in ceiling before drywall installed, locate this now. If not, cut two notches 1" deep at opposite points on the circle so outside frame can be passed through the opening.

5. Pull frame into place against the back of the drywall ensuring that the mounting flange contacts solidly against the surface of the back of drywall. The frame edge should protrude slightly beyond the face of the drywall.

6. Holding the frame firmly in place, attach with metal cutting drywall screws. It is very important to place screws on either side of hinge bracket and touch latch brackets without screwing through the steel component. The maximum distance between screws is 4"

7. Apply filler compound up to rim of access panel frame (7A). Fill access panel door leaf up to the top of metal frame (7B).. Frame height is height of finish. Ensure all gaps tightly filled. Let dry, sand, and repeat until desired finish is achieved.

8. Clean excess filler and dust from access panel frames (8A). Prime and paint the same as surrounding ceiling area (8B).

